



BREATHING LIFE INTO STEEL

철에 혼을 담는 기업, 건화

www.kunhwamc.com

경상남도 거제시 연초면 연하해안로 841-54
841-54, Yeonhahaean-ro, Yeoncho-myeon, Geoje-si, Gyeongsangnam-do, Korea

Tel. +82 55. 639. 5300 Fax. +82 55. 632. 9977

Awakening The **Spirits** Through Our Passion,
Breathing Life Into Steel



CONTENTS

Company Profile	3
History	5
Competitiveness	7
Major Production	11
Performance	15
Quality Management	17
HSE Management	18
Core Business	19

COMPANY PROFILE

Overview

(주)건화는 조선·해양 블록 제작 전문 기업으로 생산부지 396,039m², 생산능력 240,000 TON/년, 절단·조립·의장·도장·탑재에 이르는 일관생산시스템을 갖추고 있습니다. 고객의 눈높이에 맞는 차별화된 제품을 공급하기 위해 끊임없이 혁신하여 지속적인 성장을 추구하고 있습니다.

Kunhwa was established in 2000 and is now one of the largest block manufacturing factory in Korea. Kunhwa has developed an integrated production system from Cutting to Pre-Erection, with a production site of 396,039m² and the capacity to produce 240,000 ton/year. We will strive to pursue continuous improvements to ensure customers' growth and future developments.

회사명 Company Name	주소 Address	대표전화 Telephone
(주)건화 Kunhwa Co., Ltd.	경상남도 거제시 연초면 연하해안로 841-54 841-54, Yeonhahaean-ro, Yeoncho-myeon, Geoje-si, Gyeongsangnam-do, Korea	+82 55. 639. 5300



Business Philosophy

Knowledge management is the foundation of our company in which we communicate in a harmonious environment to bring transformation that drives innovation, impacting the world.



Symbol



하나된 마음으로 세상을 밝히다.
Shining a light in the world, together in unity.

건화의 심볼마크는 하나의 광원으로 세상을 밝히는 태양처럼 소통과 화합을 통한 하나된 마음으로 세상을 조용히 변화시키는 건화의 혁신 의지를 상징합니다.

Kunhwa's logo symbolizes our will to always innovate and unobtrusively bring better changes to the world through a unified approach, as the logo itself resembles the sun lighting up the world as our one light source.

HISTORY

(주)건화가 걸어온 길은 **Global No.1** 대한민국 조선역사와 함께 해왔습니다.
이제 글로벌 리더의 동반자로서 혁신의 새 역사를 열어갑니다.

Kunhwa's journey shares the history of South Korea's dominance as the global leader in the shipbuilding industry. In today's current market, we are witnessing a new chapter in history of innovation, leading the global economy.

NO.1

- 2000 08** 임천공업(주) 법인 설립
Established Imcheon
- 2001 01** 대우조선해양(주) 업체 등록
Supplier of DSME
- 10** GL 공장승인
GL Factory Approval
- 12** 대우조선해양(주) 우수업체 선정
Selected as Preferred Supplier by DSME
- 2002 04** ISO 9001 획득
Obtained ISO 9001(Quality Management System Certificate)
- 05** 대우조선해양(주) 협력사 혁신활동 우수상
DSME Subcontractor Innovation Award

- 2008 09** 대우조선해양(주) 그린파트너십
환경경영 우수협력사 선정
DSME Green Partnership Excellence Award
- 2009 04** ISO 14001 획득
Obtained ISO 14001
(Environmental Management System Certificate)
- 2011 10** (주)건화로 사명 변경
Establishment of Kunhwa through reorganization
- 2012 03** 거제 모사일반산업단지 승인
Industrial Complex approved by city of Geoje

- 2013 01** 대우조선해양(주) 사외협력사 최우수상 수상
DSME Best Subcontractor Award
- 11** OHSAS 18001 획득
Obtained OHSAS 18001(Acquisition Health and Safety Management System Certification)
- 2014 01** 공장 증축(조립, 도장, 옥외작업장)
Site Expansion (Assembly, Painting, Shelter)
- 2015 01** LPG Tank Insulation Shop 신축
Construction of Insulation Shelter for LPG Tank

- 2018 05** World Class 300 프로젝트 기업 선정
Selected as a World Class 300 Company in Korea
- 2019 01** 대우조선해양(주) 사외협력사 최우수상 수상
DSME Best Subcontractor Award
- 03** 600TON 골리앗크레인 증축
600 ton Goliath Crane Expansion



COMPETITIVENESS

TOTAL AREA 396,039 m² [약 12만평]

공장면적 | Manufacturing Site

Total Area	177,246m ²
Cutting · Assembly Shop	83,806m ²
Outfitting Shelter	29,954m ²
Painting Shop	28,724m ²
Pre-Erection Area	29,900m ²
LPG Tank Insulation Shop	4,862m ²

생산능력 | Production Capacity

Steel Cutting · Fabrication	240,000 ton/year
Block Assembly	216,000 ton/year
Outfitting	216,000 ton/year
Painting	192,000 ton/year
Pre-Erection	264,000 ton/year

주요시설 | Facilities

Goliath Crane	600ton, 500ton
Transporter	9대 (850ton 외)



- ① 자재 적치장 Material Stock Area
- ② 절단·가공 공장 Cutting-Fabrication Shop
- ③ 조립 공장 Assembly Shop
- ④ 의장 공장 Outfitting Shelter
- ⑤ 도장 공장 Painting Shop
- ⑥ LPG Tank Insulation Shop
- ⑦ P.E 작업장 Pre-Erection Area
- ⑧ 선적/하역장 Quay
- ⑨ 사무실 Main Office

COMPETITIVENESS

“EVERYTHING under the ONE ROOF”

1 절단·가공 | Cutting & Fabrication

- 절단·가공 3개동 운영 [25m(W) x 148m(L) x 15m(H)]
- Plasma Cutter 8대, CNC Gas Cutter 2대
- 절단 후 소조립 JIT 공급 체계 구축
- 3 Shops in operation [25m(W) x 148m(L) x 15m(H)]
- 8 Plasma Cutters, 2 CNC Gas Cutters
- Completion of a JIT Supply System(Sub-Assembly after Cutting)



2 소조립 | Sub-Assembly

- 소조립 4개동 운영 [25m(W) x 148m(L) x 18m(H)]
- 20 ton Overhead Crane 6기
- 생산 능력 향상을 위한 Tact 시스템 구축
- 4 Shops in operation [25m(W) x 148m(L) x 18m(H)]
- 6 20 ton Overhead Cranes
- Formation of a Tact System for improved production capacity



3 중조립 | Mid-Assembly

- 중조립 2개동 운영 [32m(W) x 360m(L) x 17m(H)]
- 120 ton Overhead Crane 27기
- 공정별 전문화 생산 시스템 구축
 - 판계(주판+LONGL) - 평중조 - 곡중조
- 2 Shops in operation [32m(W) x 360m(L) x 17m(H)]
- 2 120 ton Overhead Cranes
- Establishment of specialized production system for each process
 - Panel - Flat Midassembly - Curved Midassembly



4 대조립 | Grand-Assembly

- 대조립 3개동 운영 [42m(W) x 305m(L) x 17m(H)]
- 150 ton Overhead Crane 각 동별 2기
- 3차원 조립 전문화 공장 운영
 - 대형 선수/선미 곡블록 전문
 - 300 ton급 초대형 조립 생산 능력 확보
- 3 Shops in operation [42m(W) x 305m(L) x 17m(H)]
- 2 150 ton Overhead Cranes for each shop
- Operation of 3D Assembly Specialized shop
 - Specialized in Large Fore/After + Curved Blocks
 - Successfully secured production capability for huge sized block (300 ton)



5 의장 | Outfitting

- 옥외 Shelter 24개동 운영 [47m(W) x 630m(L) x 19m(H)]
- 2.8~5 ton Overhead Crane 47기
- 의장 품질 고급화 및 전천후 생산 구축
 - 48EA BLOCK 동시 의장 작업
 - 의장 작업 옥내화율 100%



7 탑재 | Pre-Erection

- 600 ton 및 500 ton Goliath Crane 각 1기
- MEGA P.E. 전문화
 - 14EA MEGA P.E. BLOCK 동시 작업
 - 대형 선박 및 해양 플랜트 최적화
- 1 600 ton Goliath Crane, 1 500 ton Goliath Crane
- Specialization of MEGA Pre-Erection
 - Can work on 14EA MEGA P.E. Blocks simultaneously
 - Optimized for large vessels & offshore plants



6 도장 | Painting

- MEGA BLOCK을 위한 전처리 및 도장 Shop 보유
 - 전처리Shop 2개동 운영 [42m(W) x 62m(L) x 19m(H)] (국내 유일 1회 11,300m² 전처리 작업 가능)
 - 도장Shop 9개동 운영 [42m(W) x 62m(L) x 19m(H)]
- 전처리+도장 일체화 시스템 운영
- Pre-Blasting and Painting shops for MEGA Block
 - 2 Pre-Blasting shops in operation [42m(W) x 62m(L) x 19m(H)] (The only one in Korea that blast 11,300m² at once)
 - 9 Painting shops in operation [42m(W) x 62m(L) x 19m(H)]
- Integration of pre-blasting + painting system



MAJOR PRODUCTION

Container Ship



LNG, LPG Carrier



MAJOR PRODUCTION

VLCC



Offshore Plant



PERFORMANCE

LNGC

ALPHA GAS	ALPHA GAS 173,400 CBM LNG CARRIER
BW	BW MEGI 93,400 CBM LNG FSRU
SEA TANKERS	SEA TANKERS 173,400 CBM LNG CARRIER
BP	BP 173,400 CBM LNG CARRIER
DYNAGAS	YAMAL ARC7 172,410 CBM LNG CARRIER
YAMAL	YAMAL TEEKAY 173,400 CBM LNG CARRIER
YAMAL	YAMAL ARC7 172,600 CBM LNG CARRIER
MARAN GAS	MARAN 173,400CBM LNG CARRIER
MARAN GAS	MARAN 159,800 CBM LNG CARRIER
E.ON MOL	E.ON MOL 180,000 CBM LNG CARRIER
TEEKAY	TEEKAY MEGI 173,400 CBM LNG CARRIER
TEEKAY	YAMAL ARC7 172,410 CBM LNG CARRIER
CHANDRIS	CHANDRIS 173,400 CBM LNG CARRIER
KOREA LINE	KOREA LINE 174,000 CBM LNG CARRIER
HYUNDAI LNG	HYUNDAI 174,000 CBM LNG CARRIER
MOL	YAMAL ARC7 172,410 CBM LNG CARRIER
CARDIFF	CARDIFF 159,800 CBM LNG CARRIER
EXCELERATE	EXCELERATE 173,400 CBM LNG RV/FSRU

LPGC

BW MARITIME	BW 84,000 CBM LPG CARRIER
SHANDONG SHIPPING	SHANDONG 84,000 CBM LPG CARRIER
SEAQUEST	DORIAN 84,000 CBM LPG CARRIER

VLCC

SM KLC	SM KLC 300,000 DWT VLCC
PANTHEON	PANTHEON TANKERS 300,000 DWT VLCC
HUNTER	APOLLO 300,000 DWT VLCC
HUNTER	HARTREE PARTNERS 300,000 DWT VLCC
HMM	HMM 300,000 DWT VLCC
AEOLOS	AEOLOS 318,000 DWT VLCC
MARAN	MARAN 318,000 DWT CRUDE OIL TANKER
MARAN	MARAN 319,000 DWT CRUDE OIL TANKER
MARAN	MARAN 156,000 DWT CRUDE OIL TANKER
DHT	DHT 318,000 DWT CRUDE OIL TANKER
FRONTLINE	FRONTLINE 300,000 DWT CRUDE OIL TANKER
AWILCO	AWILCO 300,000 DWT CRUDE OIL TANKER
SONANGOL	SONANGOL 156,000 DWT OIL TANKER
CAPITAL	CAPITAL 300,000 DWT OIL TANKER
SCORPIO	SCORPIO 300,000 DWT CRUDE OIL TANKER
CHANDRIS	CHANDRIS 112,800 DWT PRODUCT CARRIER
KOTC	KOTC 317,300 DWT CRUDE OIL TANKER
AET	AET 319,600 DWT CRUDE OIL TANKER
ALMI TANKERS	ALMI 157,430 DWT CRUDE OIL TANKER

CONTAINER SHIP

HMM	HMM 23,270 TEU CONTAINER SHIP
HMM	HMM 13,100 TEU CONTAINER SHIP
MSC	SM LINE 14,000 TEU CONTAINER SHIP
MSC	PEGASUS 19,170 TEU CONTAINER SHIP
MSC	OLYMPIC 18,400 TEU CONTAINER SHIP
MAERSK LINE	MAERSK LINE 19,630 TEU CONTAINER SHIP
ZODIAC	ZODIAC 10,000 TEU CONTAINER SHIP
HAMBURG SUD	HAMBURG SUD 10,600 TEU CONTAINER SHIP
A.P MOLLER	A.P MOLLER MAERSK 19,630 TEU CONTAINER SHIP
A.P MOLLER	A.P MOLLER MAERSK 18,270 TEU CONTAINER SHIP
A.P MOLLER	A.P MOLLER 8,700 TEU CONTAINER SHIP
SFL	SFL 8,700 TEU CONTAINER SHIP
NOL	NOL 10,700 TEU CONTAINER SHIP
CMA CGM	CMA CGM 16,000 TEU CONTAINER SHIP

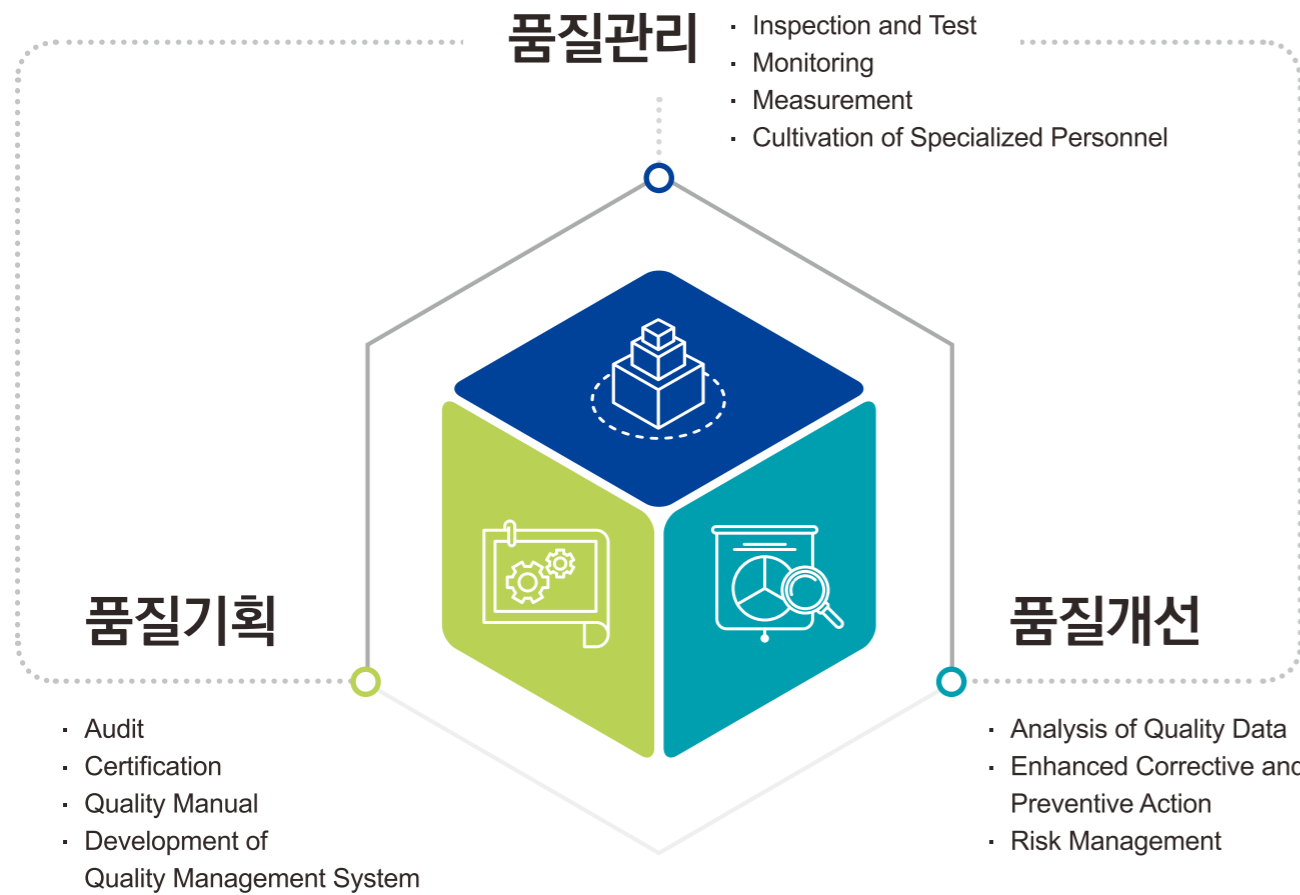
OFFSHORE PLANT

INPEX	INPEX ICHTHTS FPSO
SEADRILL	NORTHERN DRILLING DRILLSHIP
SEADRILL	SEADRILL DRILLSHIP
SEADRILL	GVA 7500 SEMI-DRILLING RIG
CHEVRON	MAFUMEIRA SUL FIXED (MSP)
CHEVRON	WHEATSTONE PLATFORM
CHEVRON	BIG FOOT E-TLP
CHEVRON	TOMBUA LANDANA DPP
STATOIL	STATOIL GINA KROG TOPSIDE EPCH
STATOIL	EQUINOR MARINER TOPSIDE EPC
TRANSOCEAN	TRANSOCEAN DRILLSHIP
MAERSK	MAERSK DRILLING CJ70 JACK-UP RIG
SONANGOL	SONANGOL DRILLSHIP
SONGA	SONGA OFFSHORE CATEGORY D-SEMI RIG
SONGA	CAT.D DRILL SEMI-RIG
TDD	TDD GRS DRILLSHIP
VANTAGE	COBALT EXPLORER DRILLSHIP
PETRONAS	PETRONAS FLNG
ATWOOD	ATWOOD DRILLSHIP
ODFJELL	ODFJELL- DRILLING RIG
ODFJELL	GVA 7500 DP SEMI-RIG
ALLSEAS	PETER SCHELTE
TOTAL E&P	FPSO CLOV
PETROSERV	GVA 7500 SEMI-RIG

QUALITY MANAGEMENT

완벽한 품질경영으로 고객만족을 넘어 **고객감동**을 실현하다

Achieving customer satisfaction beyond expectation by striving perfection in quality management



DNV-GL CERT



LR CERT



ISO 9001

HSE MANAGEMENT

무재해를 향한 기본과 원칙에 **인간존중**의 가치를 담다

Creating an accident-free environment through basic fundamentals, principles, and a culture of respect



HEALTH

- 작업 환경 개선 활동
- 건강 증진 프로그램 운영
- 산업 안전 보건 공생 협력 강화
- Work Environment Improvements
- Health Benefit Program
- Strengthening occupational safety and health standards



ISO 14001

HSE 경영방침

- PSM 제도 운영
- 체험 중심의 안전 교육
- 안전 관리 시스템 구축
- PSM System Operation
- Interactive Safety Education
- Safety Management System



ENVIRONMENT

- 환경 경영 체계 정착
- Eco-Friendly 작업장 조성
- 지역사회 환경개선 활동
- Establishment of Environmental Management System
- Eco-Friendly Workshop
- Community Environmental Improvement Activities



OHSAS 18001

CORE BUSINESS

자원 재활용 사업부 Resource Recycling Division

40년 역사의 시작, 건화기업

1974년 고철사업으로 시작된 (주)건화기업은 자원 재활용분야를 선도하는 기업으로 성장하였습니다. 사회적 책임과 역할을 다하기 위해 환경 지속성을 추구하며 나아가 자원 순환경제 발전에 기여하고 있습니다.

The beginning of a 40 year history, Kunhwa Enterprise

The company was founded in 1974 as a scrap metal recycling business and has grown into a leading company in the field of recycling of resources. In order to fulfill our social responsibilities and roles, we pursue environmental sustainability through our dedication to resource recycling and economic development.

주요 취급 품목 SS400, SM490, HARDOX 등 철판 스크랩

Main Item Steel Scrap of SS400, SM490, HARDOX, etc.



주소 | 경상남도 창원시 성산구 창곡로 179-23 Tel. +82 55. 264. 2080

건설기계 사업부 Construction & Forestry Equipment Division

(주)건화 창원공장

1993년 설립한 건화기업과 건화 기계공업이 2008년 통합되어 (주)건화 창원공장으로서 재편되었습니다. 현재 미국, 캐나다, 뉴질랜드, 일본 등의 글로벌 기업과 협력하고 있으며, 정부와 공동으로 건화 기술 교육원을 운영하여 우수한 인력을 양성하고 일자리 창출에 기여하고 있습니다.

Kunhwa-Changwon Factory

The company, which was established in 1993, was reorganized into the Changwon Factory in 2008 and is currently working together with global companies in US, Canada, New Zealand, and Japan. In cooperation with the government, we have created the Technical Education Center, in which we foster and develop skilled workers and contribute to increased job opportunities.

주요 생산품

건설기계 부품 : 굴삭기, 휠로더, 크레인, 지게차 등의 제관 부품
산림장비 부품 : 벌목 및 수확용 장비의 제관 부품

Main Products

Construction Equipment Parts : Fabrication Parts for Excavator, Wheel Loader, Crane, Forklift, etc.
Forestry Equipment Parts : Fabrication Parts for Feller Buncher, Harvester, etc.



주소 | 경상남도 창원시 마산합포구 진북면 산단1길 129 Tel. +82 55. 264. 2080 Fax. +82 55. 240. 9299

조선 · 해양 사업부 Shipbuilding & Offshore Plant Division



건화공업(주)

1999년 설립한 건화공업(주)는 생산부지 296,849m², 초대형 블록 생산을 위한 최적화된 설비를 보유하고 있습니다. 1996년 선수, 선미 블록의 성공적 납품을 시작으로 2001년 국내 최초 기가 블록을 초도 출하하였습니다. 철저한 품질관리와 기술혁신을 바탕으로 국내 블록 제작 공장의 선도적 위치를 차지하고 있으며, 대형 조선소의 전략적 협력 동반자로서 조선의 새 역사를 만들어 나가고 있습니다.

Kunhwa Industries

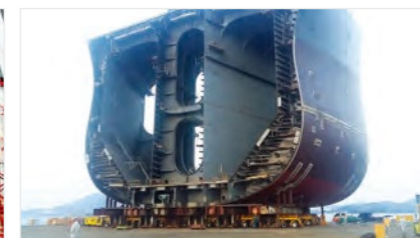
Established in 1999, Kunhwa Industries resides in a location with total area dimension of 296,849 m², equipped with facilities capable of Giga Block. Since the successful delivery of the Fore and Stern block in 1996, the first Giga Block was shipped for the first time in Korea in 2001. Based on thorough quality control and technological innovation, we are part of a new chapter in history, as we have obtained a leading position in domestic block manufacturing factory and a key strategic partner for shipbuilding companies.

주요 생산품

상선 : 선수, 중앙, 선미 블록 [Mega/Giga Block]
해양 플랜트 : Topside Module, Column, Pontoon

Main Products

Commercial Ship : Fore, Mid, Stern Block [Mega/Giga Block]
Offshore Plant : Topside Module, Column, Pontoon



주소 | 경상남도 거제시 사등면 성포로 303 Tel. +82 55. 680. 5600 Fax. +82 55. 680. 5780

철에 혼을 담는 기업, 전화 화합의 힘으로 글로벌 시장에 나아가다.

차가운 철이 뜨거운 열정과 만났을 때,
비로소 그 강인함이 가치를 지닙니다.
강철의 가치를 발휘하는 뜨거운 혼 그 중심에 건화인이 있습니다.

Breathing Life into Steel, Kunhwa Taking one step further through the power of harmony

When the lifeless steel is combined with our passion, we know that the catalyst effect
unleashes an enormous amount of energy and potential. We the people of Kunhwa will always
be at the center of this transformation, as we all witness the power released within.

